



V3 MIDDLE EAST  
ENGINEERING  
CONSULTANTS  
COMPANY  
*Visio, Vertere, Virtute*

## The Vision to Transform with Excellence

# COMPANY PROFILE

2024





**V3 MIDDLE EAST  
ENGINEERING  
CONSULTANTS  
COMPANY**

*Visio, Vertere, Virtute*

# CONTENTS

**04**

OUR HISTORY

**06**

WHO WE ARE

**08**

OUR VALUE

**09**

OUR MISSION  
AND VISION

**10**

EXPERTISE

**16**

RELATIVE  
EXPERIENCE

# OUR HISTORY

**1983**

## **Starting in Chicago, USA**

V3 Companies is established in Woodridge, Illinois, USA, laying the foundation for the future expansion of the company's expertise into the Middle East region.

**2004**

## **V3 Al-Esayi in Riyadh**

V3 Middle East expands its reach by establishing a presence in Riyadh, the capital of Saudi Arabia. This move is accompanied by a significant increase in the company's workforce, demonstrating a commitment to growth in the region.

**2012**

## **V3 Middle East Engineering Consultants Company**

Aidroos Albar joins as a partner and V3 Middle East is rebranded as V3 Middle East Engineering Consultants Company. This reflects the company's expanding scope and focus on engineering services.

**2001**

## **V3 Al-Esayi in Jeddah**

V3 Middle East takes root: V3 Al-Esayi is founded by Houssam Jabour in Jeddah, Saudi Arabia as a strategic partnership between V3 Companies and Saeed Omar Alesayi Company. This marks the beginning of V3's operations in the Kingdom.

**2008**

## **V3 Middle East**

Abdullah Al Meheini Office for Civil Engineering and Project Management becomes V3's new partner in the Middle East. This partnership brings valuable local expertise and networks to the company, enhancing its capabilities in the Saudi market.

**2015**

## **V3 Middle East in Jubail**

V3 Middle East establishes a branch office in Jubail, Eastern Province of Saudi Arabia. This expansion enables the company to capitalize on opportunities in the industrial sector and better serve clients in the region.



## 2018

### Georges Hallak as CEO

Georges Hallak, a long-standing and respected member of the company, is appointed as the new CEO. Hallak's deep understanding of the company's values and his track record of success position him to guide V3 Middle East into a new chapter.

## 2022

### V3 Middle East Class 1

V3 Middle East earns the prestigious Class 1 status as an Architecture and Engineering Consultancy firm in Saudi Arabia. This achievement highlights the company's commitment to exceptional service, professionalism, and the ability to handle large-scale complex projects.

## 2023

### Fire and Life Safety Consultancy Services

New Service Offerings: V3 Middle East expands its expertise by obtaining qualification and registration to provide Fire and Life Safety consultancy services. This diversification positions the company as a more comprehensive solutions provider in the construction industry.

## 2020

### COVID

V3 Middle East demonstrates resilience and adaptability by successfully navigating the challenges of the COVID-19 pandemic. The company uses this time to strategically restructure, streamlining operations and optimizing resources for greater efficiency.

## 2023

### From Partnership to LLC and Somou Al Mamlaka

Evolving Business Model: V3 Middle East adapts to changing regulations in Saudi Arabia by transitioning from a partnership to a limited liability company (LLC). This strategic move opens the door for new collaborations with non-engineering entities.

Strategic Partnership: Somou Al Mamlaka joins as the third local partner, bringing extensive networks and local market knowledge. This alliance strengthens V3 Middle East's position and potential for further growth.

# WHO WE ARE

---

## V3 MIDDLE EAST ENGINEERING CONSULTANTS COMPANY

### **“Visio, Vertere, Virtute – The Vision to Transform with Excellence”**

V3 Middle East Engineering Consultants Company is a Class 1 architecture/engineering and project management consultancy firm providing multidiscipline design, project management, and construction supervision services throughout the Kingdom of Saudi Arabia. The V3 Middle East Consultants team is committed to providing its clients with quality services and value-added solutions.

V3 Middle East Consultants seeks opportunities to physically improve and transform the environment. Whether that transformation involves transportation networks, water systems, raw land or new ideas on ways in which a client can build or operate more efficiently, V3 is committed to bringing excellence to that process.

V3 Middle East Consultants’ roots lie within V3 Companies, a multi-disciplined professional engineering and construction firm focused on serving private and public sector clients out of its headquarters in Woodridge, Illinois. V3 Companies gained recognition through the services it provided for residential, industrial and commercial development projects as well as public transportation and infrastructure projects.

We believe that V3 Middle East Consultants, and others in our profession, are the fabricators of modern society – its buildings, bridges, transportation systems, utility systems and environmental protection and enhancement.

We deal with the reality of a growing world population, increasing urbanization and the demand for an ever-improving quality of life and its environment. These realities, when combined with the need to protect and promote wise use of natural resources, ensure a great demand for the skills of V3 Middle East Consultants.

world population, increasing urbanization and the demand for an ever-improving quality of life and its environment. These realities, when combined with the need to protect and promote wise use of natural resources, ensure a great demand for the skills of V3 Middle East Consultants. Our vision drives us to pursue the opportunities that world growth makes possible.





## Services Provided:

- Architecture and Engineering Design
- Project Management and Construction Supervision
- Fire and Life Safety Consultancy Services
- Municipal Consulting
- Survey and Mapping

## Our Offices Location:

- Jeddah: 859-Unit No.24, Jeddah 22234 - 454, KSA.
- Riyadh: Riyadh Avenue, Floor 4, Prince Faisal Bin Turki Bin, KSA.

# OUR VALUES

---

V3 MIDDLE EAST ENGINEERING CONSULTANTS COMPANY

## **“The Professional Approach to Architecture and Engineering Solutions”**

### **Committed to Excellence:**

Expressed at each level in the firm and on every project. The firm is characterized by high quality professional services, diligence in fulfilling responsibilities, and integrity in business operation. Our goals are to provide superior professional services which result in projects with enduring value and benefit to our clients and the general public.

### **Focused on Clients:**

We have a clear understanding that a professional service is dependent upon clients for its existence. The needs of each client afford us the opportunity to apply professional expertise to planning, design and construction issues facing clients. We insist that each member of the team recognize and affirm the importance of client goals and objectives insofar as those objectives fall within the constraints of the professional ethics and conduct by which the firm abides.

### **Dedicated to Employees:**

we care about the professional and personal well being of each member of the firm. We recognize that people are the firm’s most valuable corporate assets. Our goal is to help each individual find satisfaction as a contributing member of the team. We are committed to a professional working experience and corporate attitude which promises successful, long-term relationship between employees.





# OUR MISSION AND VISION

---

With our mission guiding our vision, “the employee commitment, talent, and diversity together with strategic planning and implementation will enable us to continue to grow into a preferred provider of engineering solutions whose capabilities are unrestricted by project scope, market, or delivery system.

Our firm is a long-term growth-oriented company focusing on the future while making a difference in the present.





# EXPERTISE



# ARCHITECTURE AND ENGINEERING DESIGN CONSULTANCY

## Capabilities & Expertise

- Architectural Design
- Structural Engineering
- Civil Engineering
  
- Mechanical Engineering
  - HVAC
  - Plumbing
  
- Electrical Engineering
  - Power
  - ELV
  
- Projects Types:
  - Residential Developments
  - Hospitality Developments
  - Mixed-Use Developments
  - Commercial/Office Developments
  - Industrial Developments
  - Educational / R&D Facilities
  - Healthcare Facilities
  - Parks & Recreational Facilities



## Insight, Understanding, and Partnership.

You understand your customers: the homeowner, the retailer, the researcher, and the general public. You know what's important to them and how to serve their needs. We're the same. We understand your needs: speed, cost-efficiency, accuracy, responsiveness, and creative problem solving. Incorporating a variety of architectural and engineering design disciplines, V3 possesses the expertise to understand the true potential locked within your project. These services are enhanced by our mastery of variables such as current design trends, regulations, environmental influences and municipal requirements.

Bringing V3 in at an early stage helps you better define your objectives and reduce your costs. Critical issues are addressed in an appropriate sequence that provides innovative, cost-efficient design. Our knowledge and experience ensure that your goals are accurately assessed and confidently achieved.

Our portfolio includes projects ranging from a few thousand to millions of m<sup>2</sup>. No matter the size or complexity, we know all projects present unique design issues that require creative solutions. As a result, we give every project the same care and attention to detail.

# PROJECT MANAGEMENT AND CONSTRUCTION SUPERVISION

## Capabilities & Expertise

### • Construction Management/ Construction Engineering:

- Project Documentation
- Change Orders/Pay Estimates
- Construction Supervision
- Material Testing Inspection
- Statutory Relations
- Record Drawings
- Construction Layout
- Measurement of Quantities

### • Program Management:

- Cost Control
- Schedule Preparation & Analysis
- Constructability Reviews
- Construction Cost Estimating
- Claim Resolution
- Owners Representation



## Capable, Flexible, and Knowledgeable.

Never lose focus on the end objective: Along with effective communication, that's the key to effective construction and program management. Working closely with you from project inception to close-out, V3 delivers in a timely, cost-effective manner. We anticipate the unforeseen issues, solve problems before they sidetrack your efforts, assign and manage projected costs, and provide highly proactive service. These are just a few of the value-added components we bring to your program. But because it's not a perfect world, V3 excels at responding effectively to field conditions that deviate from original plans and assumptions. We have a long track record of bringing challenged projects back on course... and providing the best solutions regardless of the delivery system you require.



# FIRE AND LIFE SAFETY CONSULTANCY SERVICES

## Capabilities & Expertise

### Fire Engineering Services:

- Life Safety Review
- Fire Protection
- Fire Alarm
- Emergency Light
- Smoke control.
- Emergency Light
- Exit Signage
- Generator Systematic drawing.

### Fire and Life Safety Construction Supervision:

- Compartmentation Zones.
- Egress Dimensions.
- Fire Alarm Cause & Effect.
- Smoke & heat detector and manual fire alarm call point operation.
- Fire hose reel pressure and flow characteristics.
- Sprinkler head pressure and flow characteristics.
- Fire pump/Jockey pump pressure and flow characteristics.
- Raiser pipe pressure and flow characteristics.
- Emergency light and exit sign locations.
- Stair and shaft



### Fire. Code. Compliance.

The global experience of the V3 Middle East fire and life safety consulting team allows them to offer engineering and consultancy services to clients in a variety of buildings, malls, museums, theaters, stadiums, and industrial areas.

Our team are well versed in international and local fire and life safety standards within our operational markets, including the SBC, IBC Code, IFC Code, and NFPA codes and standards, as well as the regional Fire and Life Safety Code requirements. Staying on top of the latest industry developments. We are also on top of the latest requirements of local Civil Defense authorities and developments in the performance and risk-based fire engineering fields.

Our expertise is what empowers us to deliver a depth of knowledge that has proven necessary in providing our clients with technically practical and feasible solutions.

V3 Middle East Fire and Life Safety team provides golden thread fire engineering services that include strategic coordination to achieve phased handovers, guidance through the new regulatory requirements, material selection and quality control.

# MUNICIPAL CONSULTING

## Capabilities & Expertise

- Plan Review & Inspection
- Construction Engineering
- Transportation Analysis & Design
- Roadway Design
- Structural Design
- Streetscape Design
- Utility System Design
- Parks & Recreation Facilities
- Traffic Services
- Parking Facilities
- Lighting Design
- Survey & Mapping
- Graphic Information Systems (GIS)
- Water Resources
- Ecology & Wetland Services
- Ecological Maintenance & Monitoring
- Sustainable Design/Build Solutions



## Attention to Detail, Communications, and Reliability.

When things go wrong, you hear about it. With so much at stake – public trust and support, continued funding, community livability and quality of life – you deserve to have the best support for your efforts. That's why you need V3 in your corner. You can expect superior project management, attention to detail, effective communications and unwavering reliability from the V3 team.

We add value by combining innovative design solutions with the necessary practicalities of budget constraints and construction requirements. Our engineers are accustomed to presenting design solutions at statutory authority meetings and responding to their comments and concerns in a succinct, professional manner. V3's extensive experience in all facets of municipal engineering assures you successful projects and long-lasting relationships, a fact supported by our long list of repeat clients. At V3, we focus on having things go right.



# SURVEY AND MAPPING

## Capabilities & Expertise

- Topographic Mapping
  - ALTA/ ACSM or Boundary Surveys
  - High Definition Scanning
  - Hydrographic Mapping
  - Route Location Surveys
  - Plats of Highway
  - Plats of Subdivision
  - Construction Layout
  - Data Preparation for GPS Machine Control
  - Site Calibration for GPS Machine Control
  - Post-Construction (“as built”) Surveys
  - Public Utilities
  - Condominium Plats
  - Expert Witness
  - Control Network/ Densification
- **Houseline Services:**
    - Permit Surveys
    - Foundation/Lot Pins
    - Foundation Location Surveys
    - Final Design Grading
    - Final Improvement Surveys



## Insight, Understanding, and Partnership.

Your project hinges on starting with an accurate understanding of existing conditions. An error here means you’ll lose time and value, often when you can least afford it.

That’s why V3 employs state-of-the-art equipment and techniques, highly trained crews, and an acute understanding of boundary law and title issues. We’ll deliver precise results under an array of conditions with exacting documents that form the backbone of your land development process.

And we truly act as your partner. You’ll be informed of your job’s status and the conditions that impact your site quickly and clearly.

When it comes to surveying, your demands for accuracy, accountability and responsiveness should be high. At V3, we share those standards, and we’ve built our surveying practice around them.

# RELATIVE EXPERIENCE



# JEDDAH WATERFRONT

## Services Provided

### Client:

- Jeddah Municipality

### Status:

- Construction Completed in 2013

### Project Team:

- LDC: Multiple
- Design Peer Review: V3 ME.
- Site Supervision: V3 ME

### Scope of Services:

- Design Management
- Project Management
- Construction Supervision Services



## Additional Info

### Project Details:

- North Corniche
- Prince Faisal Bin Fahd Street
- Tahliya Street
- Flood Canal Street
- Falasteen Road
- Middle Corniche

## Overview

Jeddah Waterfront Project represents one of JDURC's regeneration projects. The key objectives of the project are to transform the Jeddah Waterfront area into a modern world-class destination and a vibrant place to visit, live, work, invest, and enable effective public access and utilization by designing more interactive public realm space integrated with upgraded infrastructure networks and utilities.

JDURC has identified 6 prime areas where JDURC focuses on renovation and revitalization which will act as a catalyst for commerce and tourism development namely.

### Awards:

- **Big Project Middle East Award:** This award recognizes companies and individuals that have substantially contributed to the construction and sustainability industries across the GCC (Gulf Cooperation Council) countries. Jeddah is the first city in Saudi Arabia to receive this award.
- **Makkah Excellence Award (Environmental Excellence Branch):** Jeddah Municipality won this award from the Emirate of Makkah Region in 2018 for the Jeddah Waterfront Project.



# AL URUBAH PARK

## Services Provided

### Client:

Royal Commission of Riyadh City

### Status:

- Design Stage Completed in 2022
- AOR services Completed in 2022
- Construction in Progress

### Project Team:

- LDC: LAND
- PMC: Drees and Sommer
- Design Architect: LAND
- AOR: V3 ME

### Scope of Services:

- Authority Approvals
- Codes and Standards Compliance Reviews
- Utility Providers' Coordination
- FLS Drawings Review and Civil Defense Approvals



## Additional Info

### Project Details:

- A digitally driven futuristic park of about 700,000 m<sup>2</sup>.

## Overview

The First Digitally Driven Park, Al Urubah Park is the first projects related to the territorial strategy for the development of the Green Riyadh, and it is part of a true green network that helps to rebalanced the ecosystem of the city, positively affecting the environment.

The location for Al Urubah Park appears to be of strategic interest due to its surrounding areas and connections. The Park, in fact, is placed only 3 Km away from the future green center of the city: King Salman Park. Moreover, it is located along the main N-S and W-E arterial roads of Riyadh, King Fahd Road and Makkah Al Mukarramah Road. Through Urubah Rd at West, it is well connected to the natural and green belt of Wadi Alysen.

Al Urubah Park becomes an urban centrality capable to interlace connections with the surrounding network of the City, intercepting nature through the digitization. We are creating the first digitally driven park worldwide, a place where people can experience nature in an innovative way. The Park concept starts from the interpretation of Riyadh context, which is characterized by two main elements: the urban grid and the wadis. The site blooms at the convergence of these two systems, Al Urubah Park will be the place where people meet nature.

Commercial – Completed Project

Jeddah, Saudi Arabia

# ZAHID BUSINESS PARK

## Services Provided

### Client:

- Zahid Group Holdings

### Status:

- Construction Completed in 2023.

### Project Team:

- LDC: KAOS Architects
- Project management: V3 ME
- Construction Supervision: V3 ME

### Scope of Services:

- Design Management
- Tendering Services
- Construction management
- Construction Supervision



## Additional Info

### Project Details:

- Total area 500,000 m<sup>2</sup>

## Overview

Zahid Business Park is a modern, multi-use complex located in Jeddah, Saudi Arabia. It serves as the headquarters for the diverse Zahid Group conglomerate and houses several subsidiary businesses. The park features innovative architecture, with sustainable design elements like integrated solar energy solutions. The Zahid Business Park is designed to centralize operations and foster a sense of community and collaboration within the Group's various companies.

All required master planning, infrastructure design, and studies required to seek statutory approvals and subsequent infrastructure construction approval were performed by V3 Middle East. Challenges on the project included seeking approval for the business park as a gated community within a wider master plan as well as completing the necessary formalities for land acquisition by the Ministry of Transport for their right of way use along the western front of the plot.



Educational / Research and Development – Completed Project

Riyadh, Saudi Arabia

# KING ABDULAZIZ CITY FOR SCIENCE AND TECHNOLOGY (KACST)

## Services Provided

### Client:

KACST

### Status:

- Master Plan Design Completed 2015.

### Project Team:

- LDC: LAVAnation
- Project Management: V3 ME
- Site Supervision: V3 ME

### Scope of Services: Phase 1

- Design Management
- Project Management
- Construction Supervision Services
- Codes and Standards Compliance Reviews
- Utility Providers' Coordination



## Additional Info

### Project Details:

- Construction Cost is SAR 5 Billion

## Overview

The KACST master plan is defined as an innovative and creative worldclass research organization with multiple facilities. The objective of this project is to develop a comprehensive campus for the physical assets that will support KACST mission, plans, history and create a world class research institution. The Campus development plan will describe and justify the function size location, cost and sequence of development of new facilities and the reassignment of existing facilities, and the enhancement of the public realm.

- National Satellite Technology Center.
- Petrochemical Research Institute.
- Non-destructive testing facility.
- Advanced Materials workshop.
- KACST Centers of Excellence.
- Radiation Science Lab.

# BANYAN TREE AL ULA

## Services Provided

### Client:

- RCU - Royal Commission for Al Ula

### Status:

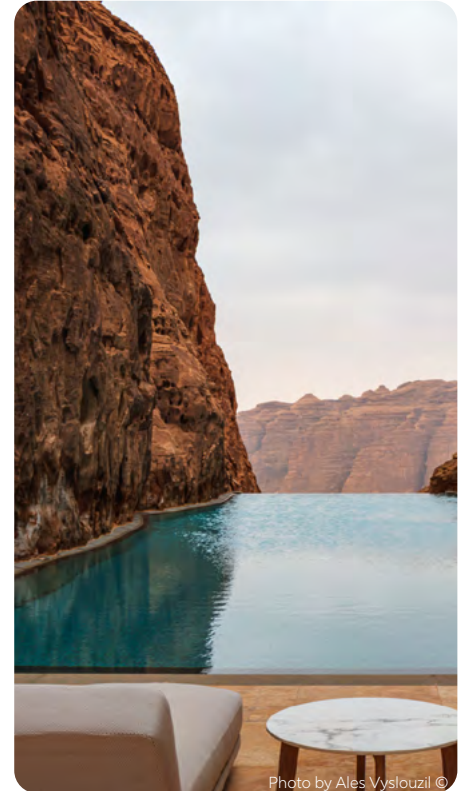
- Design Stage Completed
- Construction Completed in 2022

### Project Team:

- Designer: AW2
- Designer Guardianship: V3 ME
- AOR: V3 ME.

### Scope of Services:

- Designer Guardianship
- Construction Supervision
- Authority Approvals
- Codes and Standards Compliance Reviews
- Utility Providers' Coordination
- FLS Drawings Review and Civil Defense Approvals



## Additional Info

### Project Details:

The new tented resort is about 10,800 m<sup>2</sup> (BUA) consists of the following:

#### 47 Tents:

- 28 one bedroom
- 15 two bedrooms
- 4 three bedrooms

#### 2 Garden Pavilions:

- 2 Receptions
- 1 Lounge
- 1 Arabic & Mediterranean Restaurants
- 1 Thai Restaurant
- Outdoor Areas

- 1 Spa
- 1 Rock pool
- Micro - catchment Gardens

## Overview

Inspired by the nomadic nature of Nabataean architecture, the tented resort concept epitomizes a 'light touch' approach.

Composed of a platform and a solid structure evoking the neighboring rocks in its solidity and presence, the ensemble is protected from the sun by a canvas covering.

Privacy and shelter go hand in hand, creating an intimate environment where the breathtaking views are individually framed.

### Awards:

- AW2 Winner of the 2024 King Salman Charter for Architecture and Urbanism Award.
- Banyan Tree AlUla was Awarded the Special Prize for Exterior by the Prestigious Prix Versailles 2023.
- Middle East's Leading Luxury Desert Resort 2023.
- AHEAD MEA Awards 2023 (Africa and Middle East).
- Hemispheres Readers' Choice Awards 2023.
- Banyan Tree AlUla, Jury's Favorite in Architectural Design - Hospitality by BLT Built Design Awards.

Commercial and Hospitality – Completed Project

Rabigh, Saudi Arabia

# BAY LA SUN WATERFRONT MALL AND HOTEL

## Services Provided

### Client:

- KAEC/ EMAAR

### Status:

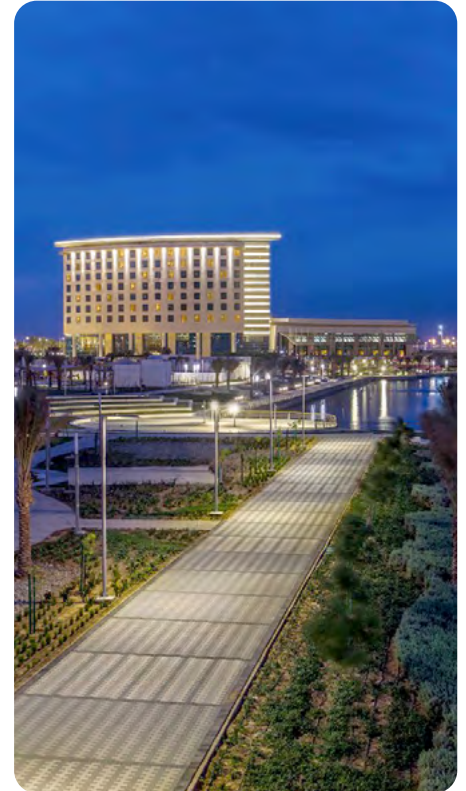
- Design Stage Completed
- AOR services Completed
- Construction Completed in 2015

### Project Team:

- Engineering Design: V3 ME
- Site Supervision: V3 ME
- Operator: AKMC

### Scope of Services: Phase 1

- Detailed Design
- Tender package preparation
- Construction Management
- Construction Supervision Services
- Codes and Standards Compliance
- Reviews Utility Providers' Coordination
- FLS Drawings Review and Civil Defense Approvals



## Additional Info

### Project Details:

- Construction Cost is SAR 250 Million
- Total land area of the project is 20,010 m<sup>2</sup>
- The buildup area is 64,189 m<sup>2</sup>
- The hotel consists of 200 guest rooms
- Gym with Sauna and Jacuzzi facilities
- Banquet hall for about 200 seats
- Laundry, kitchen and back of house facility
- 100 seats restaurant
- Meetings rooms
- Auditorium

### Awards:

#### World Travel Awards

- Saudi Arabia's Leading Business & Leisure Hotel (2016 - 2018, 2021-2024)
- Saudi Arabia's Leading Family & Leisure Destination Hotel (2017-2024)
- Saudi Arabia's Leading New Hotel (2015)
- Saudi Arabia's Leading Destination Hotel (2014)

## Overview

Bay La Sun waterfront Mall and hotel project located at Bay La Sun district in King Abdullah Economic City at Rabigh, KSA. The total land area of the project is 20,010 m<sup>2</sup> and the buildup area is 64,189 m<sup>2</sup>.

The project consists of two storey mall building and adjacent to it the eight storey hotel building. The mall consists of car parking and service rooms in basement. Supermarket, line shops and management offices at ground floor. The first floor includes of fun zone and food court.



# SOLITAIRE MALL

## Services Provided

### Client:

- Al Murqab Investment Company

### Status:

- Design Stage Completed
- AOR services Completed
- Construction Permit issued
- Construction Closure Stage

### Project Team:

- LDC: Benoy
- Construction Management: V3 ME
- Site Supervision: V3 ME
- AOR: V3 ME

### Scope of Services: Phase 1

- Site Supervision for the Early work Package
- Construction Management and Site Supervision for the Main Works
- Authority Approvals
- Codes and Standards Compliance Reviews
- Utility Providers' Coordination
- FLS Drawings Review and Civil Defense Approvals

## Additional Info

### Project Details:

- 3 basements and 3 Floors
- Estimated leasable area of 104,155 m<sup>2</sup>
- Plot Size: 59,200 m<sup>2</sup>
- Depth: 16 meter deep
- Excavation Volume: 947,200 m<sup>3</sup>

### Awards:

- Solitaire was recognized for its design, concept, and potential impact on the retail and leisure scene in the Middle East region.



## Overview

Al Murqab Investment Company (Developer) intends to design and construct a mixed-use development (3 basements and 3 floors) with an estimated leasable area of 104,155 m<sup>2</sup> that will be constructed on a 58,956 m<sup>2</sup>. The development is known as the Solitaire, The Jewel of Riyadh Project. The project will be commercial in nature with leisure, F&B, and retail components and is comprised of the following:

- Two and Half basement levels with an area of 48,070 m<sup>2</sup>
- Ground floor level with an area of 30,952 m<sup>2</sup>
- First floor level with an area of 30,619 m<sup>2</sup>
- Second floor level with an area of 16,609 m<sup>2</sup>
- Roof level

Al Marqab Investment, as developer, has appointed V3 as the AOR and construction supervision consultant to manage the project on its behalf, to provide progress and inspection reports, and identify and propose remedy for any technical problems and constraints that may affect the interest of the Developer and Financier in the project.

# MISK SCHOOLS

## Services Provided

### Client:

Mohammed Bin Salman Nonprofit City "Misk City"

### Status:

- Design Stage Completed
- AOR Services Completed
- Construction Completed in 2023

### Project Team:

- LDC: BSBG
- PMC: WSP
- AOR: V3 ME
- Construction Supervision: V3 ME

### Scope of Services:

- Construction supervision
- Authority Approvals
- Permitting



## Additional Info

### Project Details:

- Plot Area: 216,454 m<sup>2</sup> with 111,400 m<sup>2</sup> of built-up area.
- 2 sports buildings, admin building, central kitchen, and a main service yard.
- 9 educational buildings.

## Overview

The Misk Schools Campus at Misk city will be the Kingdom of Saudi Arabia's exemplar education project for the next decade.

The Misk Schools are an existing Kindergarten to Grade 12 (K-12) School that has its current facility in Riyadh. It serves as its catchment for the families of the Kingdom and due to this will play a critical role in forming the future leaders of Saudi Arabia.

The educational offer provided by Misk Schools will be enhanced by the construction of a new Misk Campus within Misk city that has its core ambition to be one of the world's top schools.

The new Misk Campus facilities will provide a world class learning environment for the students who attend it that is unrivalled in its design and facilities, constructed on a 216,454 m<sup>2</sup> plot that borders the wadi as well as the primary Boulevard through Misk city.



# DAM AND WELL SURVEY

## Services Provided

### Client:

- Diriyah Company

### Status:

- Surveys and Technical Services were Completed in 2021.

### Project Team:

- Design Consultant: V3 ME

### Scope of Services:

- Topographical Survey
- Condition Survey
- Technical Assessment



## Additional Info

### Project Details:

- Detention Dam
- 274 Wells

## Overview

The site has a detention dam and 274 wells. The purpose of this task order is to undertake condition surveys on the dam and the wells and provide a report detailing the current condition of the assets and recommendation for any proposed remediation that might be required.

**Dam Survey:** The assessment includes the dam and all ancillary structures and features, including the spillway, outlet channel, outlet headwall, downstream groynes etc. Conduct a walk over, visual inspection of the dam and complete the enclosed Dam Assessment Checklist. Photograph identified defects in detail. Assess the structural stability of the dam and foundations and make recommendations for any remedial work.

**Well Survey:** Survey the location and determine the drill depth of each well. Conduct a visual inspection of each well including all civil, mechanical, electrical, instrumentation & control features and equipment, including an estimate of the remaining service life of all components. Determine the name of installation contractor for each well. Photograph each major component of each well: civil works; pipes; pumps; switchgear; control systems etc. Conduct pump testing to establish the supply capacity of each well.

Commercial – Completed Project

Irqa, Riyadh, Saudi Arabia

# WES PLOT A MALL

## Services Provided

### Client:

- Shuaa Capital

### Status:

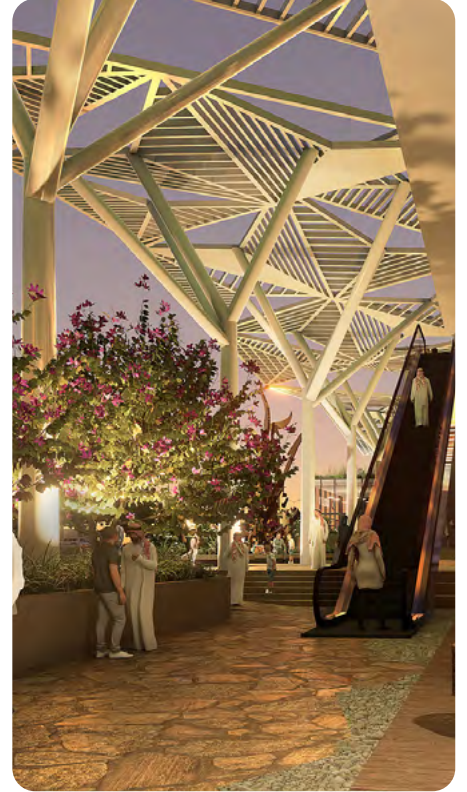
- Design Stage Completed in 2022

### Project Team:

- LDC: V3 ME

### Scope of Services: Phase 1

- A/E Design Services
- Codes and Standards Compliance Reviews
- Utility Providers' Coordination
- FLS Drawings Review and Civil Defense Approvals



## Additional Info

### Project Details:

- Land Area 10,000 m<sup>2</sup>
- Total BUA 27,000 m<sup>2</sup>

## Overview

The subject plot's location is in close proximity to the commercial and retail hub of the district, making it a suitable location for a high-end Strip Mall. The proposed mall will include multiple high-end F&B avenues to cater for the demand of the relatively under-served neighbouring residents (of Irqah & Khozama). As the surrounding areas are experiencing an increase in development and residents moving in, the foot fall is sure to increase rapidly over the next few years.

The central courtyard / alley / walkway of the strip-mall is envisioned to be partially open to provide a blended experience of a semi Open-air ambience to visitors who expect to dine in the outdoor seating.

Each avenue's outdoor seating area to be segregated by plantation and water elements that maintains the exclusivity of the F&B avenue as well as enhance the overall look of the circulation area.



# AL FAISALIAH HOTEL AND SPA

## Services Provided

### Client:

Durrat Arriyadh Real Estate Development Co

### Status:

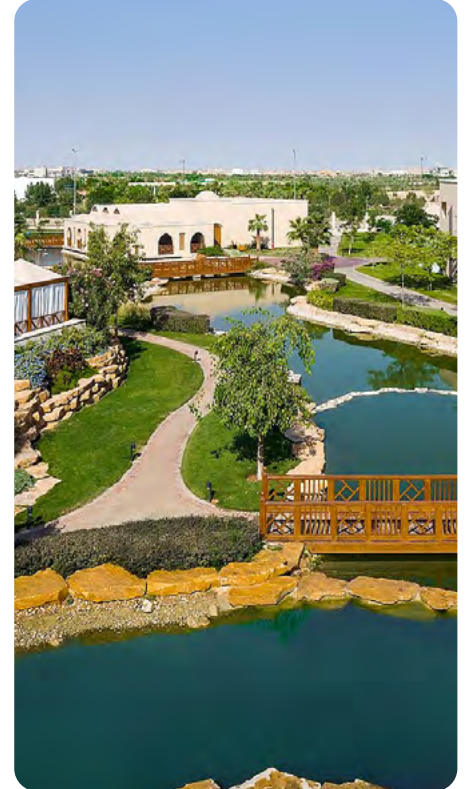
- Design Stage Completed
- AOR services Completed
- Construction Completed in 2018

### Project Team:

- Design Management: V3 ME
- Designer: El Dahan and Farid Engineering Consultants
- Construction Supervision: V3 ME
- Operator: Rosewood

### Scope of Services: Phase 1

- Construction Management and Site Supervision
- Codes and Standards Compliance Reviews
- Utility Providers' Coordination
- FLS Drawings Review and Civil Defense Approvals



## Additional Info

### Project Details:

- Construction Cost is SAR 350 Million

## Overview

Durrat Arriyadh Real Estate Development Company intends to complete the design and construct of a 5-star hotel resort and spa project in the Durrat Arriyadh Northern area of Riyadh, K.S.A. The first stage of the project comprises of a 150-room 5-star hotel, as well as a luxury spa and 10 villas that will be considered as part of the hotel development.

The second stage of this project comprises of a banquet hall for 2,000 people, another 18 villas, and the completion of a fish restaurant along a man-made lake.

## Awards:

### World Travel Awards

- World's Leading Hotel Penthouse (2015, 2016, 2019)
- World's Leading Luxury Suites Hotel (2015, 2016, 2018, 2019)
- World's Leading Business & Conference Hotel (201-2017, 2019, 2021-2023)
- Several regional awards in categories like Saudi Arabia's Leading Conference Hotel, Leading Hotel Suite, Leading Business Hotel, etc.

### Other Notable Awards:

- Middle East Hotel Awards (2016): Best Business Hotel 5 Stars.
- Luxury Lifestyle Awards (2016): Luxury Hotel & Luxury SPA & Wellness Centre.

# CROWNE PLAZA HOTEL

## Services Provided

### Client:

- Arabian Hotel Catering Company

### Status:

- Design Stage Completed
- AOR services Completed
- Construction Completed in 2010

### Project Team:

- LDC: V3 ME
- Interior Design: Interior Motives
- Site Supervision: V3 ME
- Operator: IHG

### Scope of Services:

- Design Development
- Construction Management
- Construction Supervision Services
- Codes and Standards Compliance Reviews
- Utility Providers' Coordination
- FLS Drawings Review and Civil Defense Approvals



## Additional Info

### Project Details:

- Construction Cost is SAR 21 million

## Overview

The Renovation program for the Crown Plaza Hotel in Jeddah was split into two stages, at stage 1, V3 provided design consultancy services for three wings each consists of ground floor, first floor, public areas and 7 typical floors with a total of 344 rooms of various types and sizes. At stage 2, V3 provided interior design, engineering design and construction management and supervision services for the Crystal Ball room, Sakura Japanese restaurant, Crowne Grill restaurant, Squash Court, Mashrabiah Café and the surrounding landscape.



# JALMUDA CENTRAL PARK

## Services Provided

### Client:

- Royal Commission of Yanbu and Jubail

### Status:

- Concept masterplan completed in 2019

### Project Team:

- V3 Middle East / Arcadis / CRTKL

### Scope of Services:

 Phase 1

- Existing Condition Survey Base Map
- Master Planning
- Design services
- Codes and Standards Compliance Reviews
- Utility Providers' Coordination



## Additional Info

### Project Details:

- Total area is 3 Million m<sup>2</sup>

## Overview

The Royal Commission of Yanbu and Jubail appointed V3 ME and Arcadis /Callison RTKL to study and design for the development of the Jalmudah Park in the city of Jubail, KSA covering an approximate area of 3 million m<sup>2</sup>.

V3 ME and Arcadis /Callison RTKL were tasked with creating an attractive urban and landscape design for the park that serves the residential districts of Reggah, Jalmudah and Deffi, developing a comprehensive utilities and infrastructure design that addresses the needs of the park while respecting and maintaining the requirements of the surrounding developments, as well as applying traffic and parking models into a Traffic Impact Study to determine the appropriate roadway network and parking requirements.

V3 ME and Arcadis / Callison RTKL developed three options that aimed at synergizing the Urban Design, Landscape Architecture, Utilities, Infrastructure, and Traffic and Parking for the Jalmudah Park.

## Sports and Entertainment – Completed Project

Riyadh, Saudi Arabia

# INNOVATION PARK

## Services Provided

### Client:

National Housing Company

### Status:

- Design Stage Completed
- AOR services Completed
- Construction Completed in 2020

### Project Team:

- Project Management: JLL
- Construction Supervision Services: V3 ME
- Design and Build: SBCM

### Scope of Services:

 Phase 1

- Site Supervision Services
- Codes and Standards Compliance Reviews
- Utility Providers' Coordination
- FLS Drawings Review and Civil Defense Approvals



## Additional Info

### Project Details:

- Construction Cost Approximately is SAR 47 Millions.

## Overview

The desired outcome of the Innovation Park is to showcase innovative methods of construction (MMC of FMC) in the real-life application and targeted to an audience that wants to familiarize with choices they may want to make for their own housing, as in line with those visiting interactive science museums (innovation hub center). This area will be open to public access and wants to become a center of attraction for business users, families and youth, where to spend time and live a value-enriching experience.

### In particular, the objectives of the Innovation Park are to:

- Showcase forward-looking construction technologies that can be brought to Saudi Arabia.
- Educate the general construction ecosystem (i.e. citizens, developers, contractors, institutions), local and international, on futuristic construction methodologies.
- Orchestrate an engaging theme park that can be leveraged during construction execution and after finalization.

# SHEBARA HOTEL

## Services Provided

### Client:

Red Sea Global

### Status:

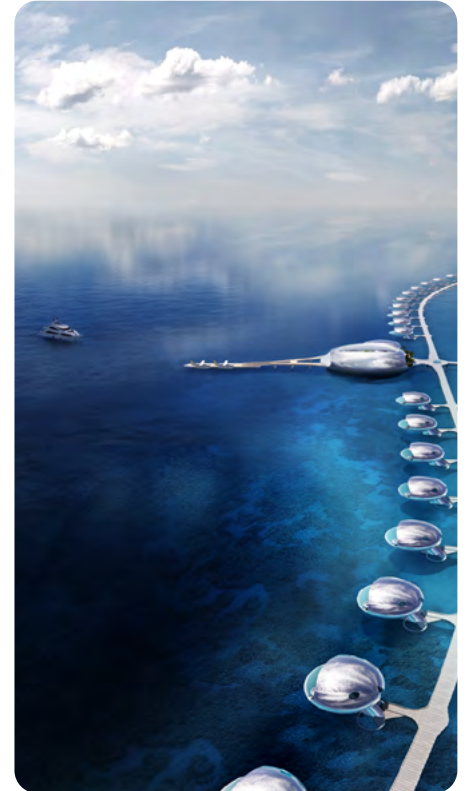
- Construction Building Permit Issued
- AOR Services Completed
- Construction Completed in 2022

### Project Team:

- Designer: KILLA Design
- AOR: V3 ME

### Scope of Services:

- Designer KILLA Design
- Architect of Record (AOR Services)



## Additional Info

### Project Details:

- The Sheybarah South Hotel #10 is a unique 7-star luxury hotel located on Sheybarah Island in the Red Sea of the west coast of Saudi Arabia.
- It consists of a 73 key ultra-luxury resort on a remote island in the Red Sea, Western KSA.

### Awards:

- **Luxury Lifestyle Awards 2023:** Best Luxury Resort Development in Saudi Arabia.
- **AHEAD MEA Awards 2023 (Africa and ME):** Shortlisted in several categories, indicating its excellent design and concept.

## Overview

Shebara Hotel is a 73 key hyper luxury resort located on the uninhabited Shaybara Island located 45-minutes by boat from the mainland. The site is home to a highly diverse environment with dense mangroves, desert flora, white sand dunes beaches, coral flats and sea grass, and some of the most beautiful and pristine coral reefs in the world hosting many species of birds, fish and other marine animals. The primary goal of the project is how best to preserve and enhance the biodiversity in the surrounding habitat while offering a luxurious experience that will attract visitors from around the globe and rebrand Saudi Arabia as a top tier marine eco-tourism destination.

The LEED-Platinum property seeks to minimise its environmental and literal environmental footprint by cantilevering the accommodation spaces above the coral reefs with only a few m<sup>2</sup> of ground impact at the base of the supporting column. The result is an aerial accommodation 'pod' that almost seems to defy gravity and suspends the guest directly above and within the beauty of an untouched marine eco-system; an observation platform for guests to witness the fish, birds and turtles that thrive in the area.



# ARAMEX BTS FACILITY

## Services Provided

### Client:

LogiPoint

### Status:

- Construction Completed in 2019

### Project Team:

- Designer: V3 ME

### Scope of Services:

- Architectural Design
- Engineering Design
- Construction Supervision
- Codes and Standards Compliance Reviews
- Utility Providers' Coordination



## Additional Info

### Project Details:

- Total area is 20,000 m<sup>2</sup>

## Overview

The project is an Aramex Build to Suite (BTS) Warehouse facility by LogiPoint and is located in the Jeddah City in the close neighborhood with the Jeddah Islamic Port.

The plot of land has an area of about 32,000 m<sup>2</sup> having a built up area of a 20,000 m<sup>2</sup> inclusive of office space of 2500 m<sup>2</sup>.

The building is a PEB type with top innovative and efficient MEP systems.

# QIDDIYA STADIUM

## Services Provided

### Client:

Ministry of Sport

### Status:

- Ongoing Project

### Project Team:

- AOR: V3 ME
- Lead Design: Populous

### Scope of Services:

- Authority Approvals
- Codes and Standards Compliance Reviews
- Utility Providers' Coordination
- FLS Drawings Review and Civil Defense Approvals



## Additional Info

### Project Details:

- Plot Area: 367,932 m<sup>2</sup>

## Overview

Qiddiya Stadium is a state-of-the-art sports facility located in the Qiddiya entertainment city, which is currently under development in Saudi Arabia. The stadium is designed to be a multi-purpose venue that can host various sporting events and activities. Qiddiya Stadium aims to provide a world-class experience for spectators and athletes alike. The facility is equipped with modern amenities, including advanced audiovisual systems, comfortable seating arrangements, and top-notch facilities for players and officials.

The stadium's design incorporates the latest technology and sustainability features, ensuring an environmentally friendly and energy-efficient operation. It is expected to become a prominent landmark within the Qiddiya entertainment city, attracting visitors from around the world. Qiddiya Stadium will serve as a hub for sporting events, ranging from football matches to athletics competitions and more. It will also be capable of hosting concerts, cultural events, and other entertainment activities, making it a versatile venue for a wide range of events.

As part of the larger Qiddiya project, the stadium aims to contribute to the development of sports and entertainment in Saudi Arabia, providing a platform for athletes, performers, and enthusiasts to come together and showcase their talents. Overall, Qiddiya Stadium represents a significant investment in the sports and entertainment infrastructure of Saudi Arabia, offering a world-class venue for various events and contributing to the growth of the country's sports and entertainment industry.

Commercial – Completed Project

Riyadh, Saudi Arabia

# THE 303

## Services Provided

### Client:

- KAFD Development and Management Company

### Status:

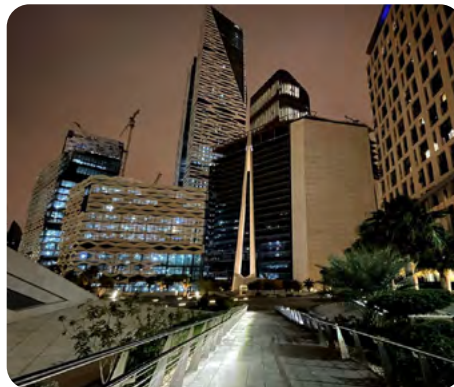
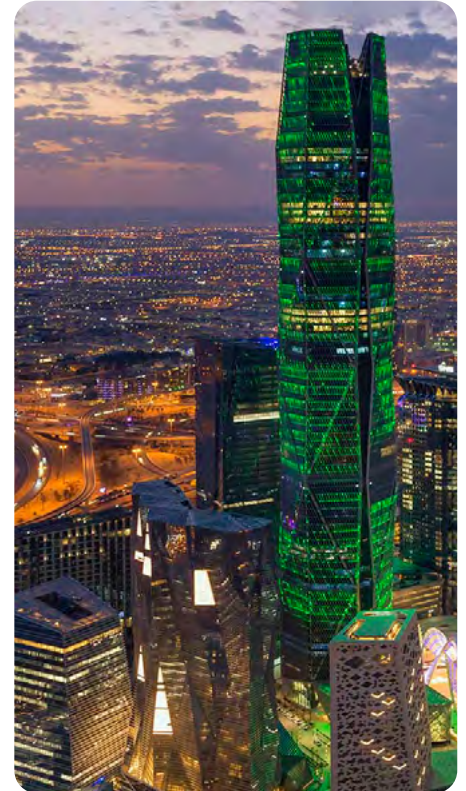
- Construction Completed in 2019

### Project Team:

- JLL: Project Management
- Supervision Consultation: V3 ME
- Designer: Khatib and Alami
- Contractor: Nesma and Partner

### Scope of Services:

- Construction Supervision Services
- Codes and Standards Compliance Reviews
- Utility Providers' Coordination
- FLS Drawings Review and Civil Defense Approvals



## Additional Info

### Project Details:

- Construction Cost is SAR 21 Million

## Overview

Terrace Design theme is inspired by a combination of existing urban form and imagination, and it forges connections between people, architecture, and land, following the Triangle lines of modern architecture and selecting hardscape materials that reflect colors, texture, and materials that match with modern theme. Exercising a modern aesthetic to create places of unique and simple beauty, working with sustainable methods to create landscapes that will endure.

Usages: Act as space to activate and reconnect the surrounding urban area by re-imagining the boundaries as cultural spaces which are connected to KAFD city and public buildings as generators for urban life. Also act as architectural environment that enhances both social and interaction of wellbeing. Designed to be attractive place where people can relax, gather, play, and picnic.

### The proposed design includes:

- Pop-up restaurant
- Sunken event plaza
- Herbal garden
- Comfizone
- Vibrant livable place
- Crystal garden



# KING SALMAN ENERGY PARK (SPARK)

## Services Provided

### Client:

Saudi Aramco

### Status:

- Services Completed in 2020.

### Project Team:

- Engineering Design Services: V3 ME
- Designer: CH2M HILL

### Scope of Services: Phase 1

- Operation and Engineering Services
- Monitoring Requirements
- Milestone review of Detailed
- Engineering Design Services
- Land Preleasing and Leasing Planning
- Technical Support during the FEED and EPC
- Codes and Standards Compliance Reviews
- Utility Providers' Coordination



## Additional Info

### Project Details:

- Total area of 50 square kilometers
- Capacity is 77,000 residents.

### Awards:

The Innovation Project of the Year Award at the Construction Innovation awards Middle East 2021. This highlights how SPARK prioritizes innovation in its development and commitment to localizing the energy value chain.

## Overview

SPARK is an energy industrial city that will be developed in three phases over a total area of 50 square kilometers. It shall grow into an integrated industrial city consisting of industrial land and associated support components. It is anticipated that 77,000 residents shall be located in the city.

V3 ME was appointed to address key principles and foundational guidelines for the design of various development components by issuing all required documents, policies, procedures and templates for industrial and non-industrial land leasing.

V3 ME was also appointed to review and provide insight from an operational and maintenance perspective on the Pre-commissioning and Mechanical Completion Plan, and to participate in milestone review of the detailed engineering design.

# LIGHT INDUSTRIES AREA in ASFAN

## Services Provided

### Client:

Sabqon International Holding

### Status:

- Construction Completed in 2017

### Project Team:

- Designer: V3 ME
- Construction Supervision: V3 ME

### Scope of Services: Phase 1

- Design and Construction
- Supervision Services
- Codes and Standards Compliance Reviews
- Utility Providers' Coordination



## Additional Info

### Project Details:

- Construction Cost is SAR 1.25 Billion
- Total area is 200,000 m<sup>2</sup>

## Overview

Light Industries Area located at north of Jeddah (Asfan Zone). The project aims to establishing a zone of workshops and light industries area at Asfan as a substitute for Nozha area (south of the KAIA airport in Jeddah). Area of the project is 5 million m<sup>2</sup> divided into 4 phases of construction. The total built up area of phase 1 is more than 200,000 m<sup>2</sup>.

V3 ME scope included the design services of all disciplines, including grading, underground utilities, transportation network, site development, as well as full interdisciplinary architecture and engineering design services of all buildings.

Additionally, V3 ME was also responsible for liaising with agencies related to the permits and utility NOCs and performed construction supervision services of all construction activities onsite until handover of facilities to tenants.

# SAUDI OLYMPIC TRAINING CENTER

## Services Provided

### Client:

Ministry of Sport

### Status:

- Design Stage Completed
- AOR services Completed
- Construction in progress

### Project Team:

- Survey Works: V3 ME
- AOR: V3 ME
- Lead Design: Populous

### Scope of Services:

- AOR Masterplan
- Toposurveys



## Additional Info

### Project Details: 20 Assets:

- Archery
- Carpark
- Net Hall
- Combat Hall
- Climbing Hall
- Football Court
- Basketball Courts
- Indoor Athletic Hall
- Outdoor Athletic Field
- Renovated Green Hall
- Beach Handball Court
- Athletes Accomodations
- Renovated Aqautic Centre
- Athletes Centre and Pavilion
- High Performance Health Centre
- Welcome Centre and SOTC offices
- Saudi Arabian Federation Branches Offices

## Overview

Saudi Arabian Olympic Training Centre, is a facility dedicated to training and preparing athletes for participation in the Olympic Games. Located in Riyadh, Saudi Arabia, the training center provides state-of-the-art facilities and resources to support the development and performance of Saudi athletes across various sports disciplines.

The center offers specialized training programs, coaching, sports science support, and access to world-class training equipment. It aims to enhance the skills, physical fitness, and mental preparedness of athletes, enabling them to compete at the highest level on the international stage.

The Saudi Olympic Training Centre plays a crucial role in identifying and nurturing talented athletes, providing them with the necessary resources and support to excel in their respective sports. It serves as a hub for training, collaboration, and knowledge exchange among athletes, coaches, and sports professionals.



Infrastructure – Completed Project

Riyadh, Saudi Arabia

# BUJAIRI PUBLIC REALM AND INFRASTRUCTURE

## Services Provided

### Client:

- Diriyah Company

### Status:

- Design Stage Completed
- AOR services Completed
- Construction Completed in 2022

### Project Team:

- Supervision Consultation: V3 ME
- Designer: Atkins
- Contractor: Al Bawani

### Scope of Services: Phase 1

- Construction Supervision
- Codes and Standards Compliance Reviews
- Utility Providers' Coordination
- FLS Drawings Review and Civil Defense Approvals



## Additional Info

### Project Details:

- The project area 7 km<sup>2</sup>

## Overview

This new development will be a mixed-use project over an area of 7-km<sup>2</sup> and expected to become a centre for history, heritage and culture.

V3 Scope of work is to perform and monitor the Construction Supervision for the Bujairi Infrastructure Project and supervise the construction activities for the entire infrastructure works and add value in the management of the cost, program, quality, sustainability and safety. The intent of the construction supervision scope is to ensure compliance with the contract documents.

V3 applies best practice in construction supervision services and acts at all times in the best interest of the project through continuous monitoring and reporting of any matter that may impact the development.

# DIRIYAH GATE

## Enabling Works & Bulk Excavation

### Services Provided

#### Client:

Diriyah Company

#### Status:

- Planning and Technical Studies
- Completed in 2022

#### Project Team:

- LDC: ATKINS
- PMC: Parsons
- Construction Supervision Services: V3 ME

#### Scope of Services:

- Site Supervision for the Early Works Package (Bulk Excavation)
- Authority Approvals
- Codes and Standards Compliance Reviews
- Utility Providers' Coordination.



### Additional Info

#### Project Details:

- Plot Size: 2,1 Million m<sup>2</sup>
- Excavation Volume: 8 Million m<sup>3</sup>
- Depth: 28 Meters

### Overview

Diriyah Company, a public authority, have been tasked with preserving the historic Diriyah district of Riyadh while developing its surroundings along a heritage and traditional theme.

The new development is in the western district of Riyadh, KSA and is expected to become a center for history, heritage and culture at regional and national scale, with the UNESCO world heritage listed mud construction district of Atturaif, whose structures formed the origins of the House of Saud from the 1700's.

Diriyah Gate Bulk Excavation one of the Major Phases of Diriyah Gate Project. The Enabling Works project that has been awarded to Al Yamama Company by Diriyah Company. This project is based on three major activities.

1. Bulk Excavation of Approximately 8,000,000 m<sup>3</sup> with 26 meter deep Metro Station.
2. Crushing and Screening suitable excavated for reuse.
3. Hauling of unsuitable material.



# BUJAIRI PARKING P1

## Services Provided

### Client:

Diriyah Company

### Status:

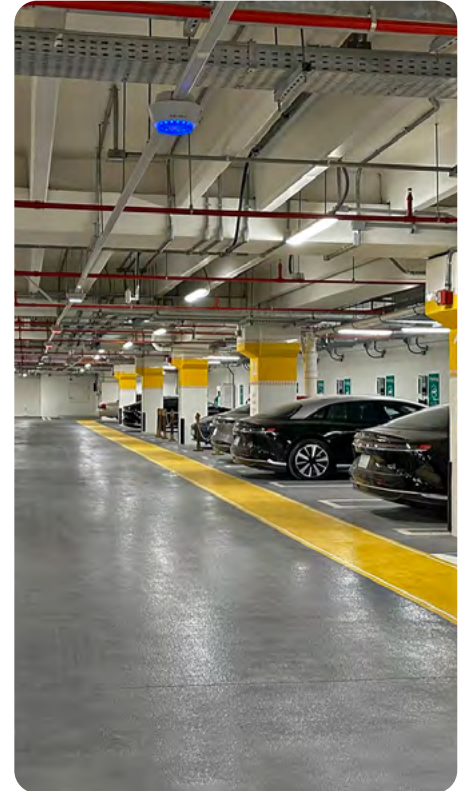
- Design Stage Completed
- AOR services Completed
- Construction Completed in 2022

### Project Team:

- LDC: WSP
- Engineering Design: WSP
- PMC: Arcadis
- Design Architect: BSBG
- AOR Consultant: V3 ME
- Construction Supervision: V3 ME

### Scope of Services:

- Site Supervision for the Early Works Package
- Authority Approvals
- Codes and Standards Compliance Reviews
- Utility Providers' Coordination
- FLS Drawings Review and Civil Defense Approvals



## Additional Info

### Project Details:

- Plot Size: 19,308 m<sup>2</sup>
- Depth: 16 meter deep
- Excavation Volume: 300,000 m<sup>3</sup>

## Overview

Diriyah Company, a public authority, have been tasked with preserving the historic Diriyah district of Riyadh while developing its surroundings along a heritage and traditional theme.

The new development is in the western district of Riyadh, KSA and is expected to become a center for history, heritage and culture at regional and national scale, with the UNESCO world heritage listed mud construction district of Atturaif, whose structures formed the origins of the House of Saud from the 1700's.

It is the intention of the Employer to deliver the 4 No carparks on a D&B basis with a pre-concept design, initial DGDA approval before developing the Employer Requirements and concept design provided by the Consultant. Furthermore, it is the intention to deliver 2No Pedestrian Bridges on a design – bid-build approach, with concept, schematic and detailed design provided by the LDC.

It is intended to appoint 3No Main Contractors to deliver the works - (1) Al Bujairi, (2) Samhan and (3) Ajmakan, Northern Cultural District and 2 No bridges. Bujairi Car Park P1 will be the first parking building to be designed out of all the above.



# SAMHAN PARKING P2

## Services Provided

### Client:

Diriyah Company

### Status:

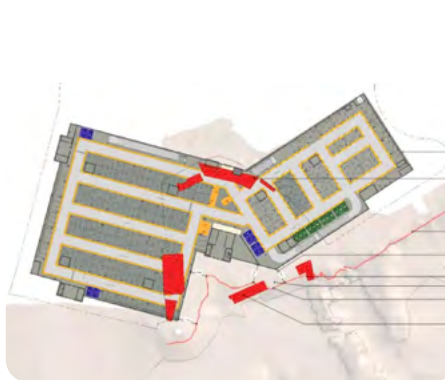
- Project Completed in 2024

### Project Team:

- LDC: WSP
- Engineering Design: WSP
- PMC: Arcadis
- Design Architect: BSBG
- AOR : V3 ME
- Construction Supervision: V3 ME

### Scope of Services:

- Site Supervision for the Early Works Package
- Authority Approvals
- Codes and Standards Compliance Reviews
- Utility Providers' Coordination
- FLS Drawings Review and Civil Defense Approvals



## Additional Info

### Project Details:

- Plot Size: 29,308 m<sup>2</sup>
- Depth: 16 meter deep
- Excavation Volume: 400,000 m<sup>3</sup>

## Overview

Diriyah Company, a public authority, have been tasked with preserving the historic Diriyah district of Riyadh while developing its surroundings along a heritage and traditional theme. The new development is in the western district of Riyadh, KSA and is expected to become a center for history, heritage and culture at regional and national scale, with the UNESCO world heritage listed mud construction district of Atturaif, whose structures formed the origins of the House of Saud from the 1700's.

It is the intention of the Employer to deliver the 4 No carparks on a D&B basis with a pre-concept design, initial DGDA approval before developing the Employer Requirements and concept design provided by the Consultant. Furthermore, it is the intention to deliver 2No Pedestrian Bridges on a design – bid-build approach, with concept, schematic and detailed design provided by the LDC. It is intended to appoint 3No Main Contractors to deliver the works - (1) Al Bujairi, (2) Samhan and (3) Ajmakan, Northern Cultural District and 2 No bridges. Bujairi Car Park P1 will be the first parking building to be designed out of all the above.

Sports and Entertainment / Infrastructure – Completed Project

Irqah, Riyadh, Saudi Arabia

# MISK CREATIVE HUB AND IRQAH STREET UPGRADE

## Services Provided

### Client:

Misk City Company

### Status:

- Design Stage Completed
- AOR Services Completed
- Construction Completed in 2022

### Project Team:

- LDC: V3 ME
- Design Architect: V3 ME
- Engineering Design: V3 ME
- AOR: V3 ME

### Scope of Services:

- A/E Design Services
- Site Supervision
- Authority Approvals
- Codes and Standards Compliance Reviews
- Utility Providers' Coordination
- FLS Drawings Review and Civil Defense Approvals



## Additional Info

### Project Details:

- Mezzanine offices
- 200 m<sup>2</sup> kitchen lab
- 1,753 m<sup>2</sup> fashion hub
- 370 m<sup>2</sup> exhibition area
- Open presentation hall
- 382 m<sup>2</sup> E-gaming Center

## Overview

An existing warehouse in Misk City is to be transformed into a unique and diverse Creative Hub with the purpose of attracting guests and local talents. The space will comprise space for investors and creative members of the community, giving them an opportunity to create and excel. The Hub will provide a platform to showcase work within temporary exhibitions and retail spaces.

It is envisaged that the Creative Hub will hold several activities and speaker sessions throughout the year which will enable participants and talents to learn through training programs, testing and hands-on classes.

The proposed new development of Misk City will be accessed from the south through the existing Riyadh suburb of Irqah. Existing local roads and streetscapes throughout this mainly residential area are of poor quality, and improvements to the approach roads are proposed to enhance integration of the existing suburb with the new development and to create a more appropriate streetscape approach to Misk City.

V3 was deployed to survey and redesign 4,411 m of road to include all the required allocations of this road, streetscaping, and underground infrastructure, in addition to all the services and utilities needed.



# ROYAL DIRIYAH GOLF CLUBHOUSE

## Services Provided

### Client:

Diriyah Company

### Status:

- Design Stage Completed
- AOR services Completed
- Construction and Supervision ongoing

### Project Team:

- LDC: BSBG
- PMC: WSP
- Design Architect: BSBG
- AOR: V3 ME

### Scope of Services:

- Authority Approvals
- Codes and Standards Compliance Reviews
- Utility Providers' Coordination
- Site Supervision
- FLS Drawings Review and Civil Defense Approvals



## Additional Info

### Project Details:

- Total area 73,488 m<sup>2</sup> (7 Ha)
- Shading structures and 2 pedestrian bridges (10 meters wide by 25-35m long).
- An arid and extensive landscape zone with mostly indigenous plants and incorporates landscape swales and retention areas that will wind the nearby District 5 Walk and several secondary pathways and will interconnect the Neighborhoods of District 5.

## Overview

Wadi Safar is a geographic area and wadi system located to the west of Riyadh and Wadi Hanifah, and near to the UNESCO World Heritage listed At-Turaif district within the Kingdom of Saudi Arabia. It covers an area of approximately 60.4 km<sup>2</sup> and it forms part of the Diriyah Company's jurisdiction Area. The proposed golf clubhouse and sports center will be one of the ultra-luxury leisure assets that will serve the second home owners. All the development will respect the traditional architectural style and cultural history of the region.

### The new proposal includes the following:

- Car Park
- Back of House
- Golf Clubhouse
- Business Centre
- Grand Restaurant
- Multiple Swimming Pools
- Sports Centre, comprising Spa, changing facility and family area
- Ancillary Buildings – Driving Range, Maintenance Centre & Rest Buildings



# NCA ACADEMY

## Services Provided

### Client:

National Cyber-security Authority

### Status:

Construction Completed in 2020

### Project Team:

- LDC: V3 ME.
- Interior Design: Graphite

### Scope of Services:

- Construction Supervision Services
- Authority Approvals
- Codes and Standards Compliance Reviews
- Utility Providers' Coordination
- FLS Drawings Review and Civil Defense Approvals



## Additional Info

### Project Details:

- Total area is 2,700 m<sup>2</sup>

## Overview

The National Cyber-security Authority is looking forward to designing the Cyber-security Academy building in order to provide a suitable learning environment for training in the fields of cyber-security. The interior design of the building will be an outstanding identity that takes it to a new level fulfilling the Authority's vision towards a safe and reliable cyberspace that can grow and prosper.

# AL FAISALIAH MALL

## Services Provided

### Client:

GENSLER

### Status:

- Construction Completed in 2019

### Project Team:

- Designer: GENSLER
- Contractor: SALINI
- AOR: V3 ME

### Scope of Services:

- AOR Services
- FLS Design Services
- Codes and Standards Compliance Reviews
- Utility Providers' Coordination



## Additional Info

### Project Details:

- Total area is 3,188 m<sup>2</sup>

## Overview

The project site is located in the Olaya district Riyadh. The Al-Faisaliah Mall is an existing retail mall with a footprint area of 3,188 m<sup>2</sup> being upgraded.

Al-Faisaliah Mall is located in the middle of the commercial area of the city, with the most distinguished and leading brands establishing new concepts related to luxury shopping. Moreover, the retail mall has distinct additions from international names in the field of fine dining.

V3 ME were appointed as the architect of record for the project being upgraded and proceeded as well with updating and designing the complete firefighting package for Al-Faisaliah Mall that is under renovation and obtained the civil defense approval and stamp of the drawings.

# LULU HYPERMARKET

## Services Provided

### Client:

Lulu Group International

### Status:

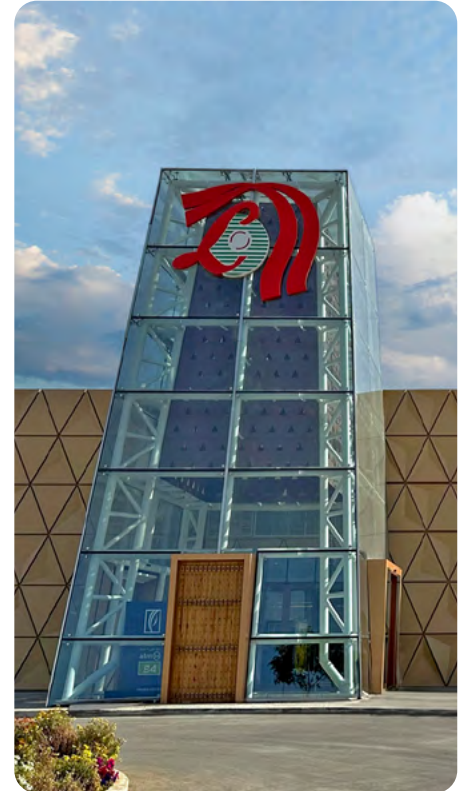
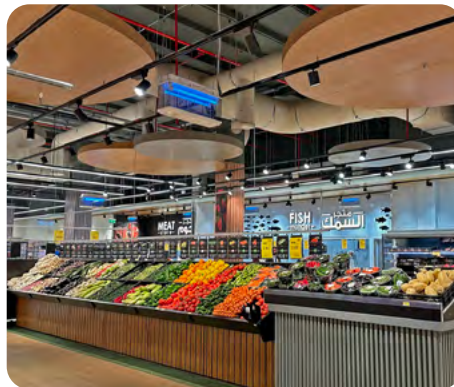
- Construction Completed in 2023

### Project Team:

- LDC: V3 ME
- Engineering Design: V3 ME
- AOR: V3 ME

### Scope of Services:

- A/E Design Services
- Authority Approvals
- Codes and Standards Compliance Reviews
- Utility Providers' Coordination
- FLS Drawings Review and Civil Defense Approvals



## Additional Info

### Project Details:

- Site area 25,962 m<sup>2</sup>
- Hypermarket area 4,830 m<sup>2</sup>
- Cigar Lounge area 1,886 m<sup>2</sup>
- Cigar Lounge Open Air Terrace 415 m<sup>2</sup>
- 228 cars parking

## Overview

Inspired by the Najdi architecture and its elements, the Lulu Hypermarket and cigar lounge are to be built on a site of 25,962 m<sup>2</sup>.

The hypermarket will be a main hub in the Diplomatic Quarter where not many hypermarkets are available. The hypermarket will cover an area of 4,830 m<sup>2</sup>.

A parking is allocated on site to cater for 228 cars.



Hospitality – Completed Project

Riyadh, Saudi Arabia

# WOMEN'S SPA BY ESPA AT AL FAISALIAH HOTEL - AL KHOZAMA

## Services Provided

### Client:

- Al Khozama

### Status:

- Construction Completed in 2015

### Project Team:

- MEP Design: V3 ME
- Supervision Services: V3 ME
- Designer: Al Dar

### Scope of Services:

 Phase 1

- MEP design consultancy services
- Construction supervision services
- Codes and Standards Compliance Reviews
- Utility Providers' Coordination



## Additional Info

### Project Details:

- Construction Cost is SAR 3 Million

## Overview

This exclusive, luxurious Ladies-only Al Faisaliah Spa By ESPA retreat is a shimmering oasis in the heart of Riyadh. Amidst rich textures, sparkling crystals and soothing waterfalls, spanning four floors, it features 13 treatment rooms, a state-of-the-art fitness centre, an indoor pool, and soothing private meditation and relaxation rooms.

## Awards:

- World's Best Spa Design
- World's Best Female Spa 2021
- Saudi Arabia's Best Hotel Spa from 2015 to 2022



# TOKI MODERN CHINESE RESTAURANT

## Services Provided

### Client:

Leylaty Group

### Status:

- Construction Completed in 2016

### Project Team:

- Construction Supervision Services: V3 ME
- Designer: H-Hospitality

### Scope of Services: Phase 1

- Construction supervision
- Authority Approvals
- Codes and Standards Compliance Reviews
- Utility Providers' Coordination
- FLS Drawings Review and Civil Defense Approvals



## Additional Info

### Project Details:

- The restaurant built up area is 1,050 m<sup>2</sup>

## Overview

The project scope for Prince Mohammad Bin Salman College (MBSC) Expansion works includes a full floor-interior fit-out including MEP works to expand the existing one floor campus to two floors to accommodate undergraduate classes.

With this expansion, the campus will add a cafeteria, bookstore/souvenir shop, day-care, student lounge and additional classes and faculty offices.

Commercial – Ongoing Project

Riyadh, Saudi Arabia

# TADAWUL OFFICES

## Services Provided

### Client:

Tadawul Offices

### Status:

- Design Stage Completed in 2022
- Construction in Progress

### Project Team:

- AOR: V3 ME
- Construction Supervision: V3 ME
- Interior Designer and Engineering: HOK

### Scope of Services:

- Construction supervision services
- Authority Approvals
- Codes and Standards Compliance Reviews
- Utility Providers' Coordination
- FLS Drawings Review and Civil Defense Approvals



## Additional Info

### Project Details:

- Fit out for 6 floor Commercial offices

## Overview

The Saudi Stock Exchange (Tadawul) is the sole entity authorized in the Kingdom of Saudi Arabia to act as the Securities Exchange (the Exchange). It mainly carries out listing and trading in securities, as well as deposit, transfer, clearing, settlement, and registry of ownership of securities traded on the Exchange. Tadawul's vision is to be an integrated financial exchange that fosters the development of a diverse Saudi capital market and competes internationally. Tadawul's mission is to offer sound, efficient and attractive capital market products and services that deliver superior value to our market participants and stakeholders. Within King Abdullah Financial District which will distinguish itself with a mix of attractive public spaces as well as retail, hospitality, residential, cultural, and commercial buildings.

KAFD is designed to meet the requirements of the international sustainability scheme, "Leadership in Energy and Environmental Design", LEED. This means that the master plan determines a set of guidelines for sustainable design and construction, which must be followed by the different international architects who design the individual buildings. The guidelines regulate conditions such as the water and energy consumption of the buildings, their use of materials, and their influence on the microclimate. They also regulate the buildings' geometry within each plot. The district will become the world's largest green urban development project, and the world's first LEED-certified urban district.



# SAUDI STAFF HOUSING COMPOUND

## Services Provided

### Client:

Saudi Airlines Catering Company (SACC)

### Status:

- Design Stage Completed in 2017
- Permitting Completed

### Project Team:

- LDC: V3 ME
- Master Plan: V3 ME

### Scope of Services:

- Condition Survey
- Master Planning
- A/E Design Services
- Codes and Standards Compliance Reviews
- Utility Providers' Coordination



## Additional Info

### Project Details:

- Plot Size: 1.25 Million m<sup>2</sup>
- The construction cost is SAR 950 Million

## Overview

The Housing Compound has two districts - North and South on a 1.25 million m<sup>2</sup> plot near KKIA airport in Riyadh, KSA. The project includes around 90 residential buildings as well as all commercial, utility, medical, civil defense, religious, and sports facilities required to support the residents of this community that total 22,000 at full occupancy.

V3 ME performed complete existing condition surveys, master planning, grading, underground utilities (power, water, firefighting, storm water, sewer, and data/telecom networks), transportation network, site development, as well as full interdisciplinary architecture and engineering design services of all buildings. V3 ME was also responsible for liaising with relevant agencies related to the permits and utility NOCs.

Additionally, V3 ME provided bid stage services related to contractor pre-qualification, package tendering, and bid analysis and recommendation of various construction packages.

# JEDDAH LOGISTICS PARK

## Services Provided

### Client:

Logipoint

### Status:

- Design Stage Completed
- Construction Completed in 2020

### Project Team:

- LDC: V3 ME
- Construction Supervision: V3 ME

### Scope of Services: Phase1

- Detailed Master Plan
- Infrastructure and Utilities Design
- Permitting
- Construction Supervision
- Codes and Standards Compliance Reviews
- Utility Providers' Coordination



## Additional Info

### Project Details:

- Total area is 315,000 m<sup>2</sup>

## Overview

Jeddah Logistic Park situated in Khumrah District, Jeddah - Kingdom of Saudi Arabia.

The park shall be located on the allocated plot of approximately 315,000 m<sup>2</sup> area. The site is located at a distance of 30 km from King Abdulaziz International Airport and 19 km from Jeddah Islamic Port. The site is located along a secondary road, which facilitates direct access to King Faisal and Al Leith Roads.

The Logistic Park will be built in phases, to be agreed with Logipoint, with large and small warehouses, accommodation block, retail strip and land lease area.

Industrial – Completed Project

Al Baha, Medniah, Qassim, Dammam - Saudi Arabia

# 4 NUPCO PHARMACEUTICAL WAREHOUSE

## Services Provided

### Client:

NUPCO

### Status:

- Construction Completed in 2022

### Project Team:

- Designer: V3 ME

### Scope of Services: Phase 1

- A/E Design Services
- Authority Approvals
- Codes and Standards Compliance Reviews
- Utility Providers' Coordination
- FLS Drawings Review and Civil Defense Approvals



## Additional Info

### Project Details:

#### AL BAHA

- Total land area is 32,000 m<sup>2</sup>
- Total built-up area of about 21,432 m<sup>2</sup>

#### Al Medinah

- Total land area is 46,432 m<sup>2</sup>
- Total built-up area of about 36,410 m<sup>2</sup>

#### Al Qassim

- Total land area is 61,031 m<sup>2</sup>
- Total built-up area of about 41,760 m<sup>2</sup>

#### Dammam

- Total land area is 70,746 m<sup>2</sup>
- Total built-up area of about 53,830 m<sup>2</sup>

## Overview

**Al-Baha:** warehouse is one of the strategic projects of Nupco as this is the first warehouse that is going to be built by Nupco. The project is located in Al Aqiq, one of the governorates in Al Baha region in the West of Saudi Arabia. The project is located to the North of Al Baha King Saud Airport. The plot of land has an area of 32,000 m<sup>2</sup> having a built-up area of about 21,432 m<sup>2</sup> and it is situated in Al Baha 1st Industrial city which is around 60km from Al Baha City.

**Al Medinah:** The National Unified Procurement Co. (Nupco) is going to build their pharmaceutical warehouse in the city of Madinah as their regional warehouse for the Madinah Province. The plot of land has an area of about 46,432 m<sup>2</sup> with a built-up area of 36,410 m<sup>2</sup> having assigned plot of land 240 m in length and 189 m in width. The warehouse comprises of a basement, ground floor and a mezzanine floor and it will be having storage capacity of about 24,000 pallets.

**Qassim:** The National Unified Procurement Co. (Nupco) is going to build their pharmaceutical warehouse in the city of Qassim as their regional warehouse for the Qassim Region. The plot of land has an area of about 61,031 m<sup>2</sup> with a built up area of 41,760 m<sup>2</sup>. The warehouse comprises of Ground floor with basement and a mezzanine floor and will be having storage capacity of about 30,000 pallets.

**Dammam:** warehouse is one of the strategic projects of Nupco to be located within MODON development in Dammam. The project site is part of the new MODON industrial park located in Dammam. The project has an assigned plot of land 368 m in length and 193 m in width with an approximate area of 70,746 m<sup>2</sup> having a Built up area of about 53,830 m<sup>2</sup>. This complex will include the new Warehouse, associated office spaces, meeting rooms and common areas, all related infrastructure and facilities that connects it to the existing site utilities as well as a covered staff parking, internal roads and guard houses within a well landscaped environment.



# QIDDIYA ESPORTS ARENA

## Services Provided

### Client:

Qiddiya Development Company

### Status:

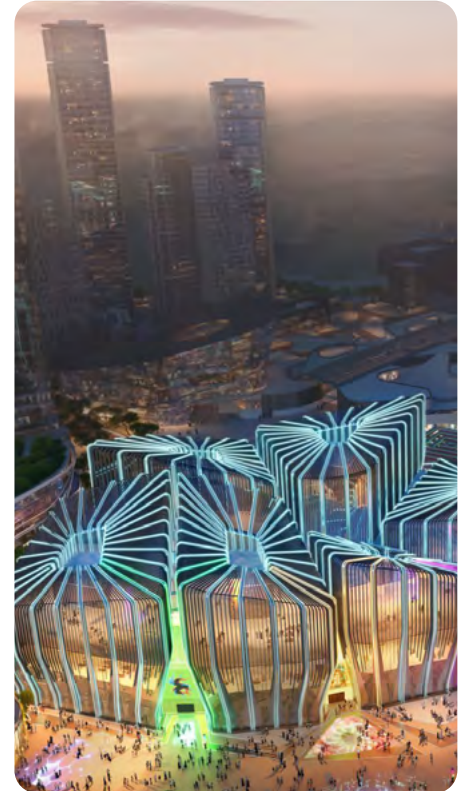
- Ongoing Project

### Project Team:

- LDC: Populous
- Engineering Design: WSP
- PMC: Plan A
- Design Architect: Populous
- AOR: V3 ME

### Scope of Services:

- A/E Design Services
- Authority Approvals
- Codes and Standards Compliance Reviews
- Utility Providers' Coordination
- FLS Drawings Review and Civil Defense Approvals



## Additional Info

### Project Details:

- About 40,000 m<sup>2</sup> dedicated to the Esports arena and all its services.

## Overview

Esports Arena will host interactive e-sports participation and viewing tournaments and events. It is to be equipped with the latest gaming technologies including augmented reality, virtual reality, and activations. The intention is to host professional and amateur gamers, and to provide several gaming related facilities such as training facilities, gaming stations, gaming related retail, café and kiosks, and flexible event & exhibition space.

This State-of-the-Art, 5155 person arena is to be designed, constructed, and handed over in an accelerated design and build program. It will be a permanent building, but the design will need to consider the form of construction and finishing most appropriate for the fast-track nature of the project. It will also need to consider the development of other Sports Facilities nearby during its own construction and especially during operation, since the expected completion of the rest of the Sports District is 3rd Quarter 2023.

# KING SALMAN FOUNDATION

## Services Provided

### Client:

Diriyah Company

### Status:

- Ongoing Project

### Project Team:

- LDC: RBTA
- Engineering Design: Burohappold
- PMC: Arcadis
- Design Architect: RBTA
- AOR: V3 ME

### Scope of Services:

- Authority Approvals
- Codes and Standards Compliance Reviews
- Utility Providers' Coordination Site Supervision
- FLS Drawings Review and Civil Defense Approvals



## Overview

Diriyah Company, a public authority, have been tasked with preserving the historic Diriyah district of Riyadh while developing its surroundings along a heritage and traditional theme.

The new development is in the western district of Riyadh, KSA and is expected to become a center for history, heritage and culture at regional and national scale, with the UNESCO world heritage listed mud construction district of Atturaif, whose structures formed the origins of the House of Saud from the 1700's.

King Salman Foundation, located in the heart of the Northern Cultural District in Diriyah Gate, aims to create a new cultural and historical hub, attracting about 650,000 visitors annually. Saudi Vision 2030 is built around three core themes:

- A vibrant society
- A thriving economy
- An ambitious nation

# HEJAZ GATE

## Services Provided

### Client:

Emaar, the Economic City

### Status:

Construction Completed in 2017

### Project Team:

- Design: Sumizura
- Construction Supervision: V3 ME

### Scope of Services:

Construction Supervision



## Additional Info

### Project Details:

- Built Up Area: 330,000 m<sup>2</sup>
- Project Cost: SAR 22 Million

### Awards:

- Intersect Security Award Winner 2018
  - Best Public Assembly Project

## Overview

Hejaz Gate, located near the Haramain Rail Station, serves as the main entrance to the King Abdullah Economic City. The gate's design is very contemporary reflecting King Abdullah Economic City's progressive ideology of taking Saudi Arabia into the 21st Century streamlined with the Kingdom's Vision 2030.

The Project included a contemporary canopy, 6 security booths, 2 administrative/support buildings along with site wide infrastructure development.

The construction of the gate posed several challenges from rust-protection of the massive steel canopy to the complex fabrication of the security booths as well as the cladding systems required for the service buildings. The project also included development of MEP infrastructure as well as equipping the gate with advanced technology including remote connections with City's HQ, automatic access control systems and monitoring networks, resulting in the Project being awarded the best security public assembly project by Intersec in 2018.



Industrial – Completed Project

Rabigh, Saudi Arabia

# ALMARAI KAP 14

## STORAGE FACILITY

### Services Provided

**Client:**

Al Marai Company

**Status:**

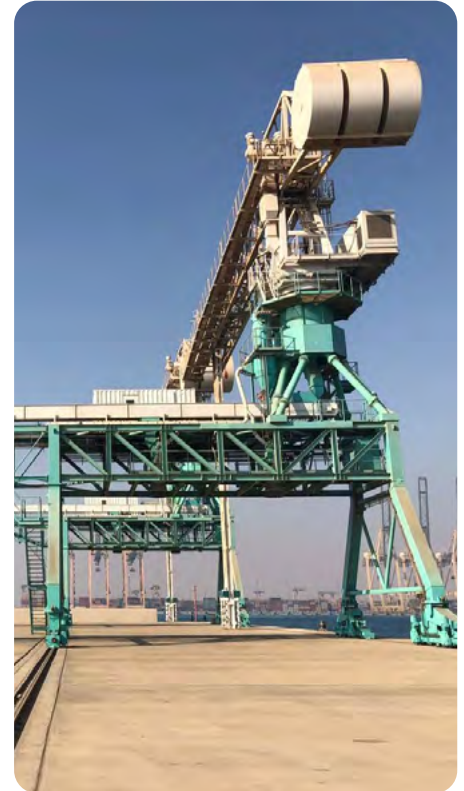
Construction Completed in 2018

**Project Team:**

- Contractor: Al Marai
- Design and Supervision Services: V3 ME

**Scope of Services:**

- A/E Design
- Authority Approvals and Permitting
- Construction Supervision



### Additional Info

**Project Details:**

- Project area 40,200 m<sup>2</sup>
- Project Cost: SAR 225 Million

**Awards:**

- Largest Silos in the Kingdom

### Overview

KAP 14 is a warehousing and storage facility project, designed and developed by V3 ME as a raw material storage facility for Al Marai. The project concept was to transfer raw material directly from the ships at the port to the material storage building through overhead conveyor belts to store the material in the silos and the storage building, which would later be dispersed from the facility via trucking across the Kingdom.

The project had the following key buildings and components:

- Main Office
- Maintenance workshop
- Corn / Soya store building
- Truck load area
- Head House
- Weigh bridge
- Reception area and Guard House
- Largest 6 Silos in the Kingdom at time of construction
- Tunnel under soils
- Overhead Conveyor belt from port to the warehousing facility
- MV Room

# 4D THEATER

## Services Provided

### Client:

EMAAR, The Economic City

### Status:

- Construction Completed in 2019

### Project Team:

- Designer: V3 ME

### Scope of Services:

- Architectural
- Engineering Design Services
- Codes and Standards Compliance Reviews



## Additional Info

### Project Details:

- Total area: 360 m<sup>2</sup>

## Overview

The first movie theater / entertainment center in Saudi Arabia. Gross area: 360 m<sup>2</sup>. One story building, modern design broken into two masses, each signifying an important feature of the functions inside. The lower mass houses the theater hall, which provides seating for 50 people, and the taller mass houses the reception hall, souvenir shop, queuing lane and WCs.

The building is situated in a park setting near the water in KAEC and in close vicinity of the Bay La Sun Hotel and designed to be seen from all different angles.

The design services provided for the project include full Architectural, Civil, Landscaping, Structural, Acoustics and MEP.

# VOX CINEMA THE ROOF ARIEC

## Services Provided

### Client:

Majid AL Futtaim

### Status:

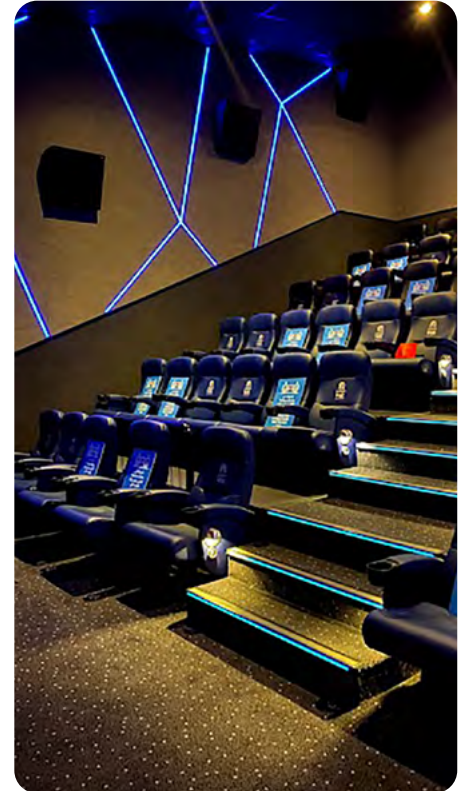
- Construction Completed in 2019

### Project Team:

- Consultants Supervision: V3 ME
- Design: UNICK Consulting Ltd
- Design: WME Consultants
- Contractor: Havelock

### Scope of Services: Phase 1

- Construction Supervision Services
- Authority Approvals
- Codes and Standards Compliance Reviews
- Utility Providers' Coordination
- FLS Drawings Review and Civil Defense Approvals



## Additional Info

### Project Details:

- Construction Cost is 20 million SAR
- Total Area, 2,885 m<sup>2</sup>

## Overview

VOX Cinema – The Roof AREIC is a cinema complex with total built up area of 2,885 m<sup>2</sup>, consisting of an indoor area and an outdoor terrace with an area of 459 m<sup>2</sup>.

The cinema complex is comprised of 8 Auditoria with a total seating of 553 with a special lounge for kids and it incorporates various restaurants, cafes, kids lounge and public circulation areas.



# VOX CINEMA KINGDOM TOWER

## Services Provided

### Client:

Majid AL Futtaim

### Status:

- Construction Completed in 2019

### Project Team:

- Consultants Supervision: V3 ME
- Design: UNICK Consulting Ltd
- Design: WME Consultants
- Contractor: Havelock

### Scope of Services: Phase 1

- Construction Supervision Services
- Authority Approvals
- Codes and Standards Compliance Reviews
- Utility Providers' Coordination
- FLS Drawings Review and Civil Defense Approvals



## Additional Info

### Project Details:

- Construction Cost is SAR 20 Million
- Total Area, 2,480 m<sup>2</sup>

## Overview

The first VIP cinema in Saudi Arabia, with a total built-up area of 2480 m<sup>2</sup>, consists of 8 theaters with a total seating capacity of 228,500 m<sup>2</sup> foyer area with high-end modern interior design, including a luxury waiting lounge and F&B hospitality services.

Educational / Research and Development – Ongoing project

Riyadh, Saudi Arabia

# BIOTECHNOLOGY RESEARCH FACILITY

## Services Provided

### Client:

KACST

### Status:

• Ongoing Project

### Project Team:

- Consultant: V3 ME
- Designer: V3 ME
- Lab Planning: CUH2A

### Scope of Services:

- Architectural
- Engineering Design Services
- Construction Supervision
- Codes and Standards Compliance Reviews
- Utility Providers' Coordination
- FLS Drawings Review and Civil Defense Approvals



## Additional Info

### Project Details:

- The project area 27,300 m<sup>2</sup>

## Overview

The Biotechnology Research Facility is a first of its kind in the Kingdom and in the region providing state-of-the-art facilities which are to include laboratory facilities up to Bio-Safety Level 3 suites including top of the line equipment, management and security.

The building consists of two wings of four stories each connected via internal pedestrian bridges spanning a four story height central atrium space between the wings. Total gross area including plant rooms will be approximately 27,300 m<sup>2</sup>.

Educational / Research and Development – Completed Project

Riyadh, Saudi Arabia

# PRINCE MOHAMMAD BIN SALMAN COLLEGE OF ENTREPRENEURSHIP

## Services Provided

### Client:

EMAAR

### Status:

- Project Completed in 2018

### Project Team:

- Construction Supervision Services: V3 ME
- Designer: DEGW
- Contractor: Concept 1

### Scope of Services:

- Construction Supervision Services



## Additional Info

### Project Details:

- Construction Cost: SAR 20 Million

## Overview

The Project Scope encompasses the planning and fit out of approximately 4,000 m<sup>2</sup> (Ground Floor) of an existing core and shell space adjacent to Bay La Sun Hotel & Marina into an undergraduate campus as an extension to an operational Executive Learning and Entrepreneurial Centre (incubator) school of business for King Abdullah Economic City (KAEC) in association with Babson College.



Commercial – Completed Project

Riyadh, Saudi Arabia

# EEC HQ - 5TH FLOOR FIT-OUT

## Services Provided

### Client:

EMAAR

### Status:

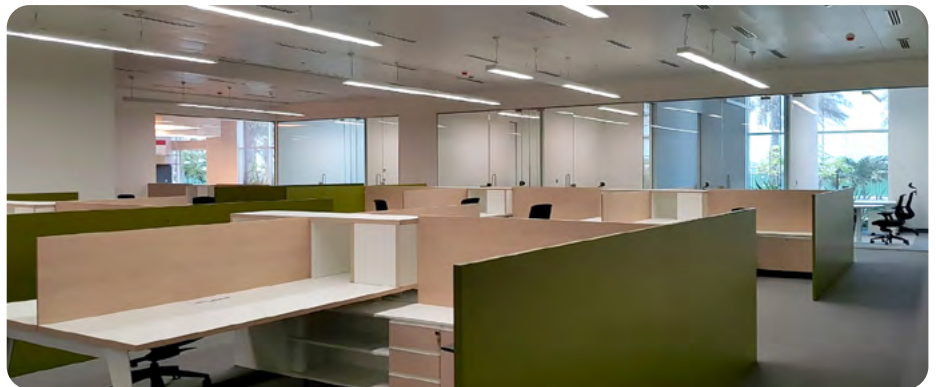
- Construction Completed in 2018

### Project Team:

- Design Review: V3 ME
- Designer: DEGW

### Scope of Services: Phase 1

- Design Review
- Construction Supervision Services
- Codes and Standards Compliance Reviews
- Utility Providers' Coordination



## Additional Info

### Project Details:

- Construction Cost: SAR 25 Million

## Overview

The project scope included complete interior fit-out including Civil/ Architectural, MEP, IT and Furniture works to deliver a full functional office, to the client, Emaar Economic City. The developed office was spread over an area of 4,500 m<sup>2</sup>, with an open office design, breakout/huddle rooms, meeting/conference rooms, design rooms and a dedicated indoor smoking area. The design objective was to create a sustainable and smart workspace that was technologically advanced yet simplified in appearance.

Environmentally, the space was designed to promote team collaboration while still enabling individual work.

# MBSC EXPANSION WORK

## Services Provided

### Client:

EMAAR, The Economic City

### Status:

- Construction Completed in 2021

### Project Team:

- Construction Supervision Services: V3 ME
- Designer: Concept 1

### Scope of Services:

 Phase 1

- Construction Supervision Services
- Codes and Standards Compliance Reviews



## Additional Info

### Project Details:

- Construction Cost: SAR 16 Million

## Overview

The project scope for Prince Mohammad Bin Salman College (v) Expansion works includes a full floor-interior fit-out including MEP works to expand the existing one floor campus to two floors to accommodate undergraduate classes.

With this expansion, the campus will add a cafeteria, bookstore/souvenir shop, day-care, student lounge and additional classes and faculty offices.

# THE WORLD ACADEMY SCHOOL

## Services Provided

### Client:

Emaar

### Status:

- Construction Completed in 2017.

### Project Team:

- Design: INNOCAD
- Construction Supervision: V3 ME

### Scope of Services:

- Design Review
- Construction Supervision



Photo by Paul Ott



Photo by Paul Ott

## Additional Info

### Project Details:

- Capacity of 1,300 student
- 52 classrooms

### Awards:

- Interior Design Magazine - Best Learning Space 2018

## Overview

The World Academy (TWA) is a state-of-the-art learning facility situated in the heart of King Abdullah Economic City. This educational facility was purpose built with a vision that bright spaces create bright minds. The design encourages universal design compliance, including natural lighting, skylight structures, terraces, and arcades and meets high standards of regionally sustainable practices.

TWA has a built-up area of 10,500 m<sup>2</sup>, a capacity of 1,300 students and includes 52 classrooms, a digital planetarium, an auditorium, an achievement and special needs centre, a teacher centre, a life skills and entrepreneurship centre, and a college facility. The interior provides students with several huddle spaces integrated within the public areas and themed segregation of various areas. IoT was a critical part of construction with a focus on providing an advanced and integrated IT infrastructure that supports digital learning.



THE VISION TO  
TRANSFORM WITH  
EXCELLENCE

تحويل  
الرؤية  
بأمتياز

Visio,  
Vertere,  
Virtute.

Riyadh Avenue Mall, Floor 4,  
Prince Faisal Bin Turki Bin,  
Riyadh, Saudi Arabia

Tel: +966 (011) 40 20 444  
Fax: +966 (011) 40 23 522  
E-mail: info@v3international.com

Emaar Square, Office # 502  
Floor 5, Building E-10, Al  
Fayha'a, Jeddah, Saudi Arabia

Tel: +966 (012) 65 26 385  
Fax: +966 (012) 65 26 386  
E-mail: info@v3international.com

[www.v3international.com](http://www.v3international.com)